

7104 Ambassador Road

Rutherford Business Park | Woodlawn, MD



Address: 7104 Ambassador Road
Woodlawn, MD 21244

Building Size: 30,257 SF

Available SF: Suite 100: 5,500 -17,596 RSF Available
Suite 225: 2,564 RSF - Avail. 11/19
Suite 265: 1,323 RSF

Rental Rate: \$20.25/SF

Parking Ratio: 4.5 / 1,000 SF; Free & Unreserved

Location & Amenities:

- SSA & CMMS Headquarters less than 1 mile away
- Convenient to Routes I-695, I-95, I-795, I-70, US Route 40 & I-83
- Complete range of business services available nearby including restaurants, daycare, mall and banks
- Excellent visibility from I-695
- Park-like setting with attractive landscaping and desirable glass line
- Newly renovated common areas

Telecom: Verizon & Comcast



FOR MORE INFORMATION CONTACT Alan C. Grabush | Principal | T 443.725.9000 x114 | alang@thecsgroup.com

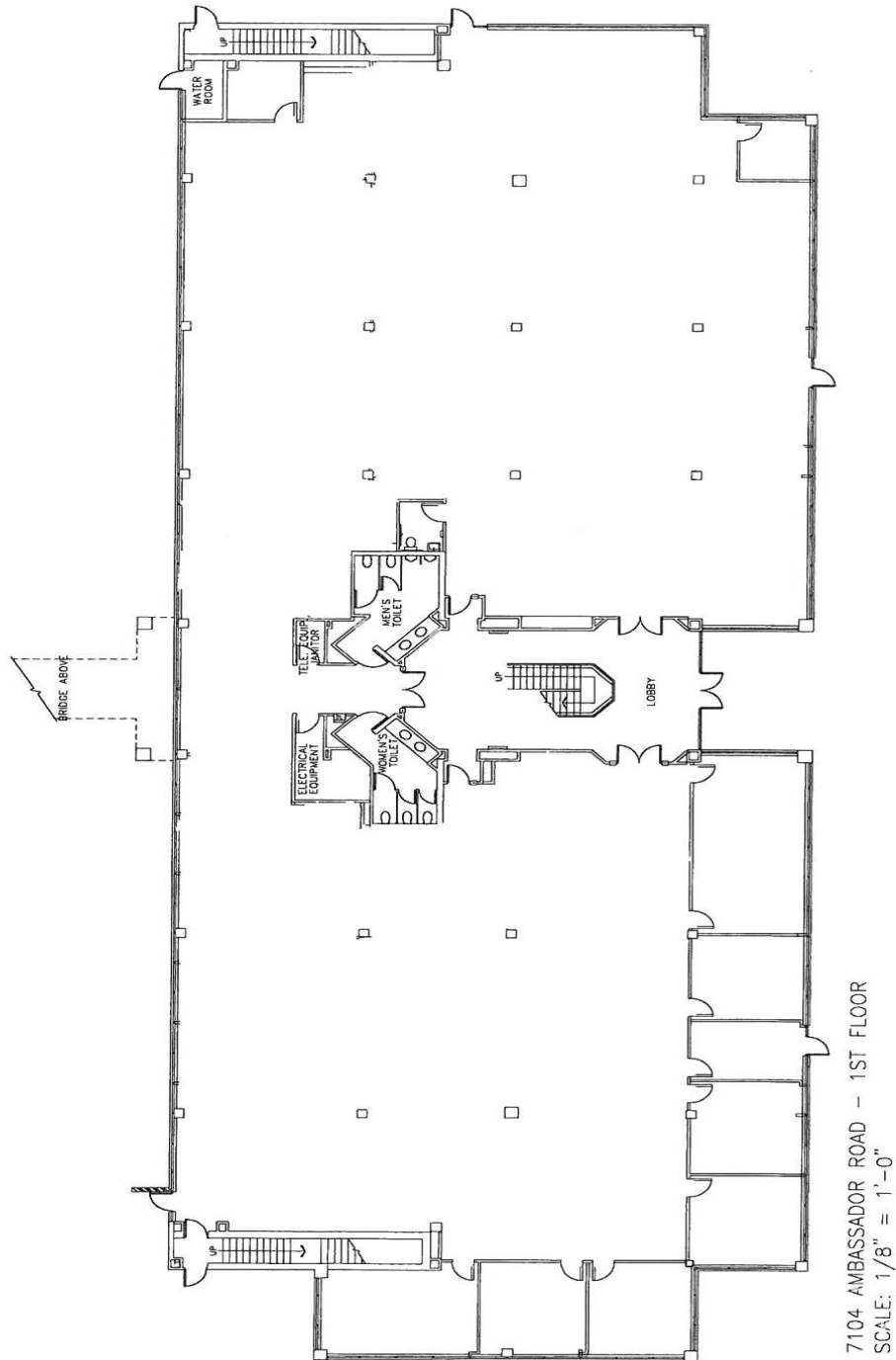
www.csgpartnersllc.com

7104 Ambassador Road

Rutherford Business Park | Woodlawn, MD



AS-Built Floor Plan



7104 AMBASSADOR ROAD - 1ST FLOOR
SCALE: 1/8" = 1'-0"

Suite 100: 17,596 RSF

FOR MORE INFORMATION CONTACT Alan C. Grabush | Principal | T 443.725.9000 x114 | alang@thecsgroup.com

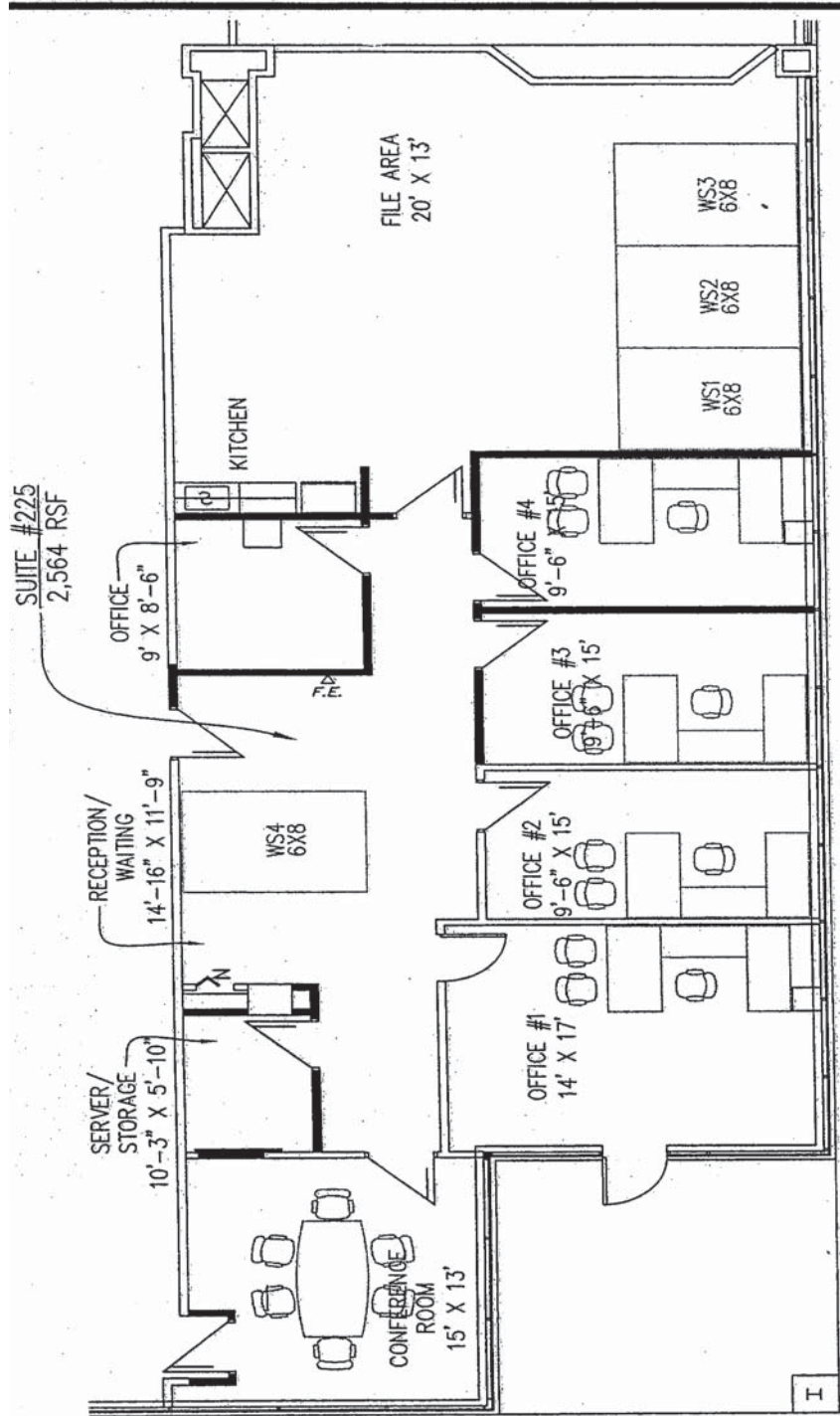
www.csgpartnersllc.com

7104 Ambassador Road

Rutherford Business Park | Woodlawn, MD



AS-Built Floor Plan



Suite 225: 2,564 RSF

FOR MORE INFORMATION CONTACT Alan C. Grabush | Principal | T 443.725.9000 x114 | alang@thecsgroup.com

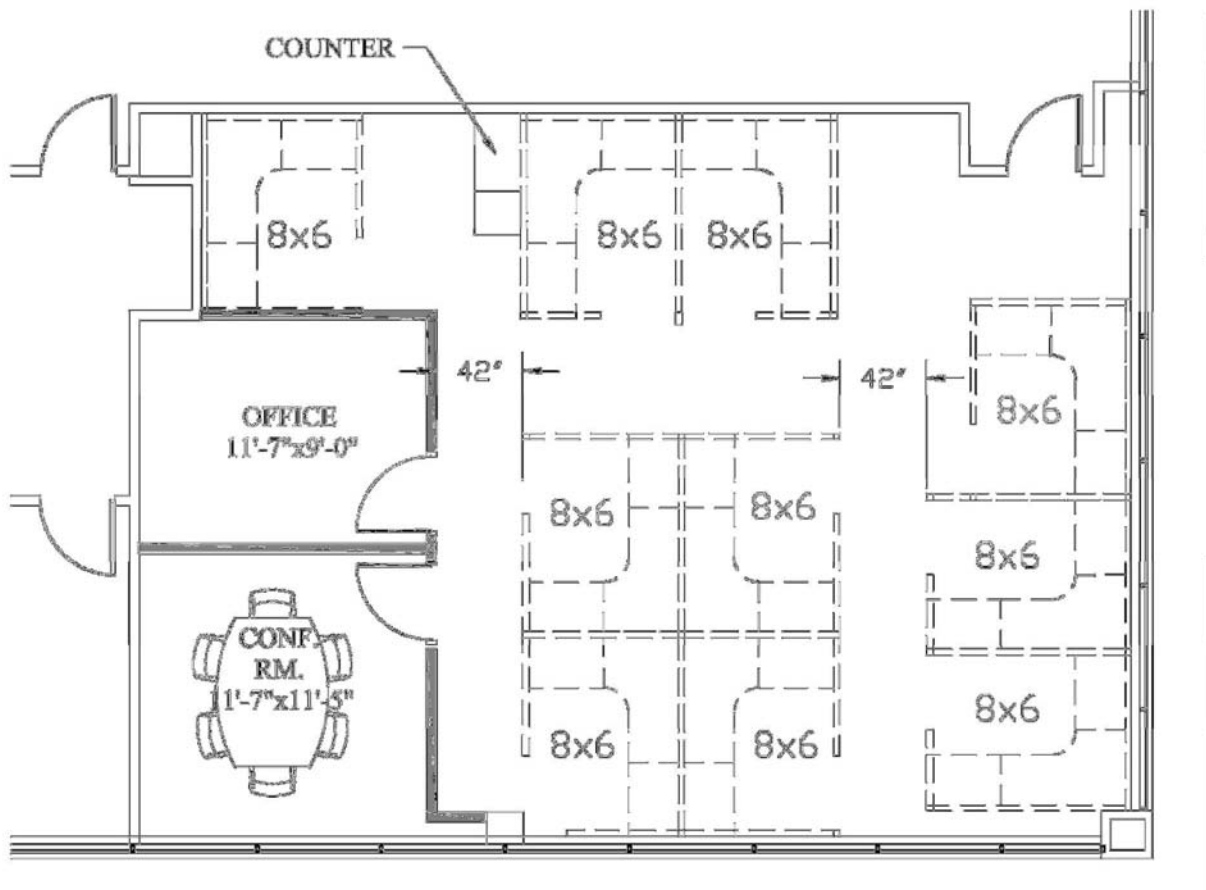
www.csgpartnersllc.com

7104 Ambassador Road

Rutherford Business Park | Woodlawn, MD



AS-Built Floor Plan



Suite 265: 1,323 RSF

FOR MORE INFORMATION CONTACT Alan C. Grabush | Principal | T 443.725.9000 x114 | alang@thecsgroup.com

www.csgpartnersllc.com